

# KE-22Q

---

## ALL PURPOSE DEGREASER

### FOAMING PUMP SPRAY FORMULA

A fantastic ready to use spray cleaner

### EXCELLENT SPOT CLEANER

Effective. Works well on all water-washable surfaces

### SPRAY & WIPE

Convenient. Simply spray surface and wipe clean

### ECONOMICAL

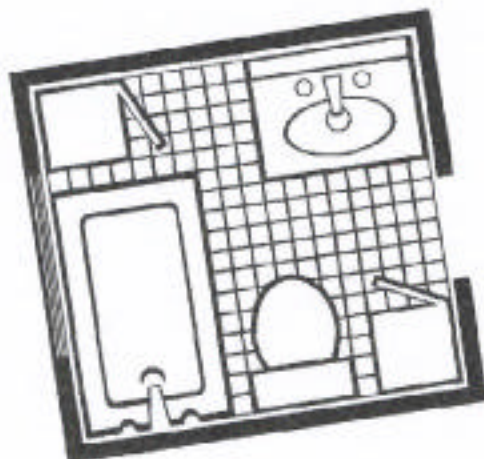
No messy mixing. Just spray the amount you need to do the job!

### EASY TO USE RTU

Effective on grease, grime, smudges, crayons, wax, fingerprints, smoke film, water spots, soap scum

### VERSATILE

Can be used on wood, metal, concrete, plastic, porcelain, vinyl, enamel, varnish, lacquer surfaces



---

---

Kinzua Environmental, Inc.  
Cleveland, Oh. 44114  
800-233-5079  
[www.kinzuachem.com](http://www.kinzuachem.com)

# KE-22Q

## DESCRIPTION

A convenient ready-to-use spray cleaner that works well on all water-washable surfaces. Easy to use and very effective on grease, grime, smudges, fingerprints, smoke film, water spots, soap scum, crayons, wax and other such soil. Not recommended for use on glass surfaces.

## APPLICATION

### **SUPER SPRAY CLEANER**

**Effective • Convenient • Economical**

*For any spray-and-wipe job, big or small. Industrial or institutional clean up and graffiti removal in any kind of facility, on any kind of soil. No rinse, no residue. The clean, crisp fragrance leaves the air freshened.*

## DIRECTIONS FOR USE

Adjust the spray nozzle to the proper setting for the job. Broad spray for cleaning large areas. Narrow spray for spot cleaning. Hold bottle approximately 12 inches from surface and spray. Allow cleaner to stand on surface for at least 15 seconds. Wipe surface clean with a dry cloth.

## SPECIFICATIONS

Appearance: ..... Green liquid  
Fragrance: ..... Characteristic  
pH: ..... 10.00  
Flash point: ..... None. Non-flammable  
Solubility in water: ..... Complete  
Authorization: ..... USDA authorized for use in  
federally inspected meat and poultry plants

## PRECAUTIONS

Keep out of reach of children. May cause eye or skin irritation. Do not take internally. Do not breathe vapor or fume. Rinse empty container with water and discard. This product is intended for industrial and commercial use and storage by trained service persons only. Manufacturer will not be responsible for any injury, loss, or damage, if product is used in any manner not in compliance with label directions or if precautions are not observed.

## FIRST AID

**EYES:** Immediately flush with large amounts of water for at least 15 minutes; contact physician. **IF SWALLOWED:** Induce vomiting. Drink large quantities of water. Consult physician. **EXTERNAL:** Flush with large amounts of water. Remove contaminated clothes. Seek medical attention.