

Repair and rebuild anything made of concrete

# InstaCrete<sup>®</sup>

CONCRETE REPAIR EPOXY PUTTY STICK

## Patch...

- Floors
- Curbs
- Steps
- Mortar
- Brick re-pointing
- Chipped concrete

## Repair...

- Tile
- Statues
- Lawn ornaments
- Birdbaths
- Cemetery headstones
- Cracks and seams

## Anchor...

- Bolts, screws
- Nails
- Railings
- Legs

## Seal...

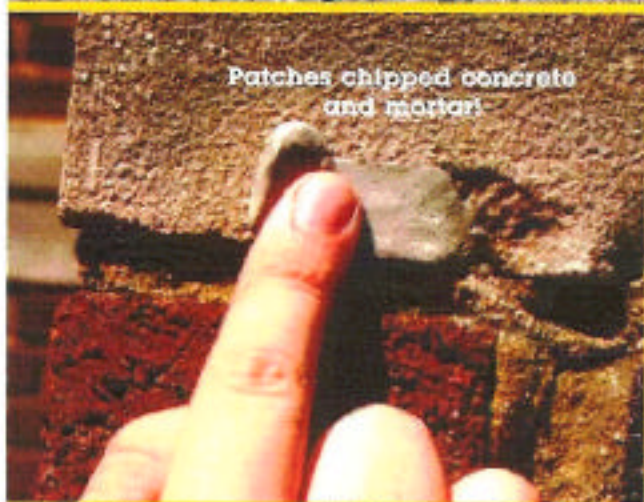
- Basement leaks
- Tie rod holes



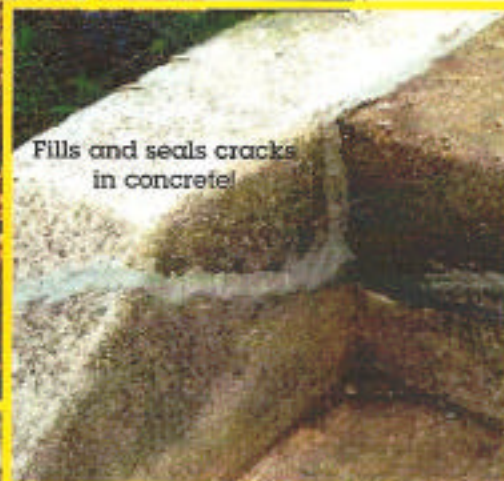
- The ultimate solution for small or emergency repairs
- Easy-to-use and mistake-proof
- Bonds instantly with superior strength
- Saves hundreds of dollars in repairs
- Belongs in every toolbox



Rebuilds birdbaths, lawn ornaments and statues!



Patches chipped concrete and mortar!



Fills and seals cracks in concrete!

Made in U.S.A.

Kinzu Environmental, Inc.  
Cleveland, Oh. 44114  
800-233-5079  
[www.kinzuachem.com](http://www.kinzuachem.com)

**4**  
MINUTE  
WORK  
LIFE

# InstaCrete Concrete Repair Epoxy Putty Stick

## Product Description

InstaCrete is a hand-mixable, fast-setting epoxy putty that quickly repairs concrete and masonry. It also bonds to metals, wood, glass, and many plastics. After mixing, it forms a concrete repair polymer that cures to a concrete-like color and texture. Each handy stick contains pre-measured portions of activator and base throughout — no measuring or mixing tools are necessary. The consistency (like modeling clay) eliminates drips and runs, facilitates adhesion to the substrate, and allows the material to be shaped and formed as needed before curing begins. After 60 minutes the application can be drilled, sanded, filed, topped, and painted. Suitable for interior or exterior use, it is resistant to water, chemicals, and temperature extremes. InstaCrete contains no solvents or VOCs. It's non-flammable and releases no noxious fumes. It won't shrink or pull away. The unused portion stays fresh for future use when saved in its original package.

## Performance Data\*

<b>SHELF LIFE AT 75°F (24°C), minimum</b>	<b>24 months</b>
<b>SHORE D HARDNESS AT FULL CURE (24 hrs)</b>	<b>80</b>
<b>LAP SHEAR TENSILE STRENGTH</b>	
On steel (1" x 1" x 1/16")	700 lbs (4.8 MPa)
On concrete	Concrete failure
<b>COMPRESSIVE STRENGTH</b>	<b>8,000 psi (55 MPa)</b>
<b>SHRINKAGE</b>	<b>&lt;1%</b>
<b>NON-VOLATILE CONTENT</b>	<b>100%</b>
<b>DIELECTRIC STRENGTH</b>	<b>300 volts/mil</b>
<b>UPPER TEMPERATURE LIMITS</b>	
Continuous	250°F (121°C)
Intermittent	300°F (149°C)

## CHEMICAL RESISTANCE

Resistant to hydrocarbons, ketones, alcohols, esters, halocarbons, aqueous salt solutions and dilute acids and bases.

## NOT INTENDED FOR STRUCTURAL APPLICATIONS

\*Not to be used in specification purposes.

## How To Use

Before applying, roughen and clean the area to be repaired. Then follow these easy steps.



1. Cut



2. Mix



3. Apply

Mixed Color  
CONCRETE  
GREY

1. **Cut** or twist off required amount.
2. **Mix** by kneading with fingers to a uniform color. If mixing is difficult, warm InstaCrete to room temperature or slightly above.
3. **Apply** to surface to be repaired within 2 minutes of mixing. Force into any cracks or holes and strike off excess material, preferably with a tool moistened with clean water.

When applying to a damp, wet or slowly leaking area, work the mixed material forcefully into the surface and apply pressure until adhesion begins to take effect.

**For best results:** Use damp fingers for easier mixing, application, and smooth appearance of the cured compound. Remove excess material before hardening begins.

**Curing:** InstaCrete has a 4- to 7-minute work life. Functional cure occurs within 60 minutes.

## WARNING

• Contains Epoxy Resin and Tri(dimethylaminomethyl)phenol. Exposure may cause allergic reactions. • May be harmful if swallowed. Get prompt medical attention if ingested. • Eye irritant. If eye contact occurs, rinse with tap water for 5 to 10 minutes. If irritation persists, seek medical care. • Skin irritant. Wash hands thoroughly with soap and water after use. If skin irritation occurs, seek medical attention. • KEEP OUT OF REACH OF CHILDREN.

## Availability

InstaCrete is one in a family of Specialty Epoxy Putties originated and manufactured by Polymeric Systems, Inc. Also look for FastSteel®, AquaMend®, QuikAluminum®, QuikCopper®, QuikTitanium®, RepairItQuik®, QuikPlastik® and QuikWood®. These Polymeric Epoxy Putties give you the ability to fix just about anything.



**Kinzua Environmental, Inc.**  
**Cleveland, Oh. 44114**  
**800-233-5079**  
**www.kinzuachem.com**